



# ANNUAL REPORT 2015-16





# Annual Report 2015-16

1. The Anganwadi Project
2. Vice President's Message
3. The Year in Review
4. Board Members
5. India Team Members
6. Project Report - Bholu 15
7. Project Report - Bholu 14
8. Financials
9. Treasurer's Summary
10. Future Plans

*"According to our thoughts, we can transform each anganwadi into a clean and beautiful temple with basic amenities at a minimum cost. There are two benefits of this idea: the children get a nurturing environment and the children's family and community get indirect inspiration and guidance."*

Jayesh Patel,  
founder Manav Sadhna





## The Anganwadi Project

The Anganwadi Project is an Australian grassroots non-profit association, working in the urban slums of Gujarat, India. It was founded in Australia in 2007 by Jodie Fried and Jane Rothschild.

The Anganwadi Project (TAP) designs and builds 'anganwadi' or pre-schools in the slum areas of Ahmedabad, India. The existing schools are often located in tiny corrugated iron lean-tos with inadequate light and ventilation and are searing hot in the summer, making it impossible for the children to learn.

TAP recruits and trains Australian design professionals who volunteer their time to live and work in India for 4- 6 months to oversee the design and construction of these schools.

We work in partnership with Manav Sadhna, (an Indian NGO) who is based in Mahatma Gandhi's Ashram and who carries out Gandhi's work.

The anganwadis are constructed by local labourers and use largely re-cycled materials. TAP's focus is on design considerations such as better use of space, ventilation, hygiene and natural light.

Since The Anganwadi Project commenced in 2007, 15 anganwadi have been built with the help of over 25 volunteer Architects from Australia, giving the community, particularly the children, women and young girls, a space for their education needs. Simple, beautiful, sustainable and child-friendly designs have been built in close collaboration with the local community.





## Vice-President's Message

2015-16 was another very rewarding season for The Anganwadi Project with the completion of Bholu 15 (our 14th pre-school) in the Ramapir No Tekro, one of the largest slums in Ahmedabad. The site for Bholu 15 is located next door to the Mosal Women's Centre, which supports many of the Bholu 15 mothers who work as ragpickers. This community often has a very marginal existence, especially during the monsoon when the rains make ragpicking impossible.

A team of two extraordinary and committed volunteers, Kali Marnane and Niini Soisalo de Mendonca oversaw the design and construction of Bholu 15 during very challenging conditions, working on site in a heat wave. With temperatures reaching 50 degrees Celcius, they were continually cheerful and positive- a real testament to the resilient qualities of the volunteers we are so lucky to have as part of the TAP family.

This season has also seen the design development of Bholu 14. TAP volunteers Harshil Parekh and Shailaja Patel (in India) are developing the design of our first lightweight bamboo structure that will be able to be dis-assembled and re-used in future designs.

TAP would like to thank all our wonderful donors and supporters. Without your support, we couldn't continue to make a difference in the lives of the children and families in the communities we serve.

**Jane Rothschild**  
Vice-President





## The Year in Review

The 2015/16 season has been a very successful one for The Anganwadi Project. The success of the season was largely due to two new amazing volunteers who joined the TAP family - Kali Marnane & Niini Soisalo de Mendonca. Kali and Niini made a formidable team working on the design and construction of Bholu 15 (see The Volunteers' Report).

They started the season in January with a derelict slum house in desperate need of repair and 6 months later left behind a beautiful, happy, colourful and light-filled learning space for the children, their families and teachers to enjoy. This transformation was only possible due to many long hours spent talking to the community, designing, model-making, drawing, documenting and generally being on site in challenging conditions up to 50 degrees. Bholu 15 is also a credit to the dedication and the hard work of our longtime builder Bakabhai & his partner Hashmokbhai.

This season also saw some wonderful progress on the Bholu14 site. Several factors (such as difficult sub-soil conditions, cost of construction and the potential reclamation of this site by the Indian Government in the not too distant future) have influenced TAP to re-think the original Bholu 14 design using a lightweight building system which will be more appropriate for this community. Harshil Parekh, a recent graduate from CEPT University and an important part of the TAP team in Ahmedabad for a few years now, along with an architecture student called Shailaja Patel have been developing a beautiful bamboo design for the site. They have been in regular contact with Jane Rothschild and Jane Johnson in Sydney and are in the process of getting the new design documented and costed.

In preparation for the next building season, Jane Rothschild and Jane Johnson have been interviewing volunteer candidates. Largely thanks to Architects Without Frontiers in Melbourne, we have had more candidates this year than ever before which is very promising for the upcoming season. We are very grateful to AWF their ongoing support.

### Jane Johnson

TAP Board Member/ Architectural Advisor





# Board Members



Jodie Fried  
President



Jane Johnson  
Board Member/  
Architectural Advisor



Pru Wood  
Treasurer



Jane Rothschild  
Vice-President



Mary Andrews  
Secretary/ Legal Advisor



Sally Pottharst  
Board Member

# India Team Members



Kali Marnane  
TAP Volunteer  
Architect



Shailaja Patel  
Local Volunteer  
Student Architect



Bakabhai  
Local Construction  
Builder



Niini Soisalo de Mendonca  
TAP Volunteer  
Architect



Harshil Parekh  
Local Volunteer  
Architect



Viren Joshi  
Manav Sadhna Founder



Mahesh Rathod  
Manva Sadhna Liason



# Project Report - Bholu 15

**PROJECT:** Bholu 15 Preschool

**WORK:** New design and construction

**LOCATION:** Ramapir No Tekro

**DATE:** January 2016 – June 2016

**TAP VOLUNTEERS:** Kali Marnane, Niini Soisalo de Mendonca

**LOCAL VOLUNTEERS:** Harshil Parekh, Shailaja Patel

**BUILDER:** Bakaconstructions

**MANAV SADHNA:** Mahesh Rahod

**TOTAL LAND COST:** \$3,800 AUD

**TOTAL BUILD COST:** \$10,200 AUD

Bholu 15 is located in Ahmedabad's largest slum, Ramapir No Tekro, which houses over 150,000 people between Ashram Road and Late Mahendra Mistri Marg opposite Manav Sadhna, which is based at the Gandhi Ashram. Bholu 15 serves the Vadhiyarivas Community, located on Tekro's edge on the flood plain of the creek near Old Wadaj. Residents in the community earn money as ragpickers or by making and selling toys and metal boxes on the street. The site for Bholu 15 is situated next door to the Mosal Women's Centre, which supports many of the Bholu 15 mothers who work as ragpickers. The design of Bholu 15 aims to connect with the centre to provide flexible spaces that can expand and contract as required by the community whilst providing a safe and beautiful environment for children to learn in.

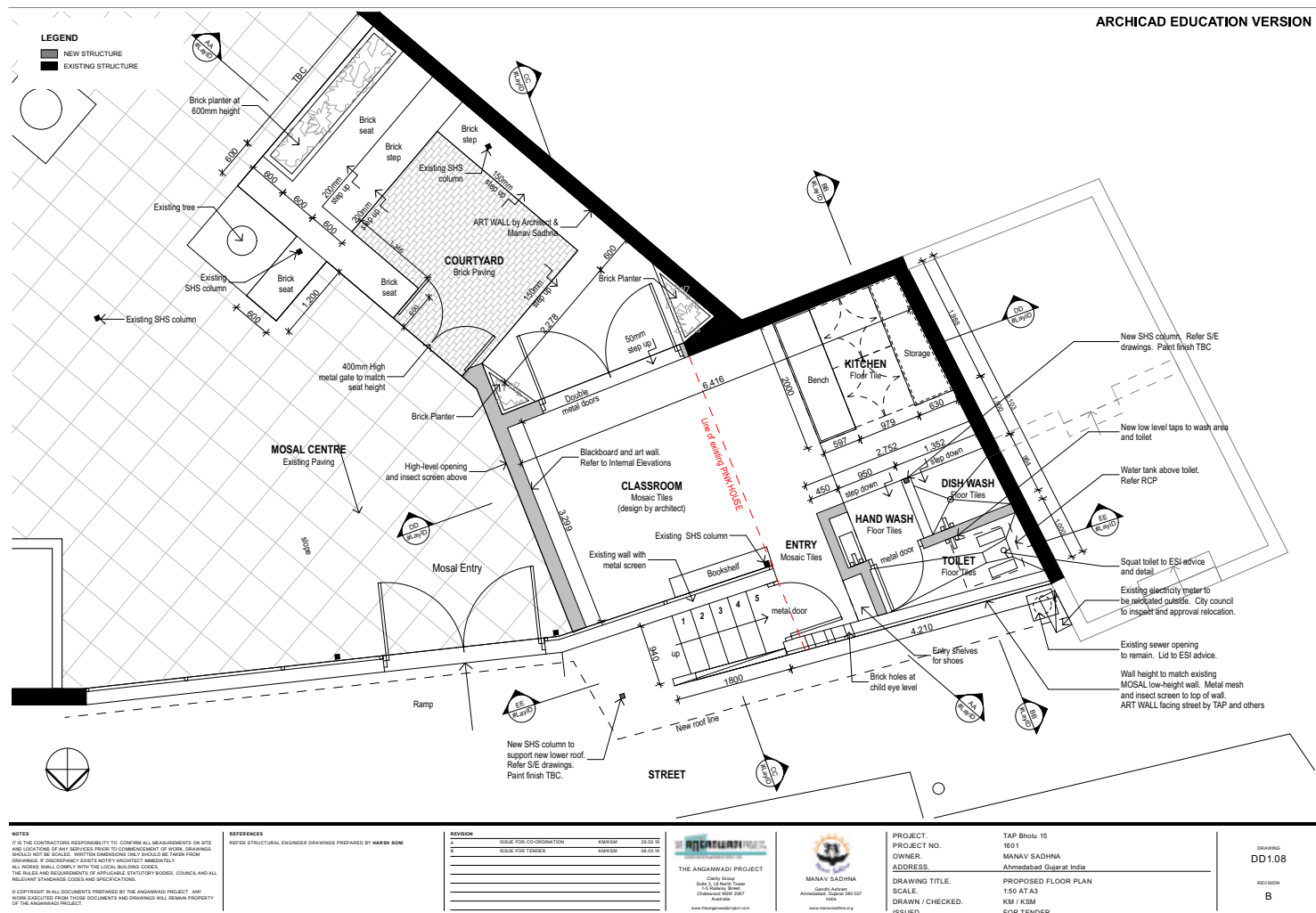
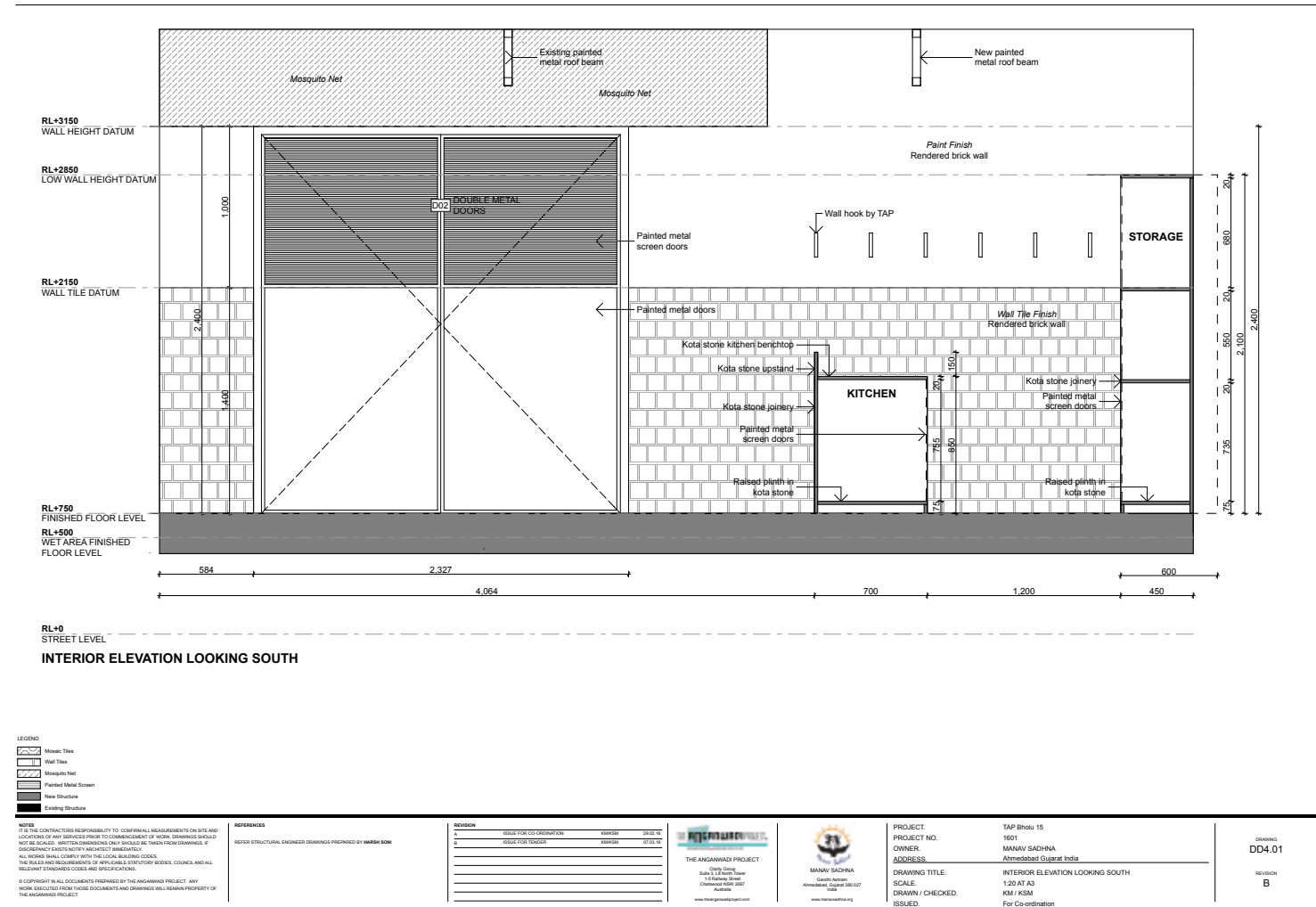
*"The (TAP) female volunteers were inspirational for the girls in the community, because they had left behind their comfort zones and come from very far to work hard in such harsh conditions. I sometimes heard the women of the community remark to the boys who were loafing around that these girls are more powerful than them! To make them realize the strength of a girl." Harshil Parekh*



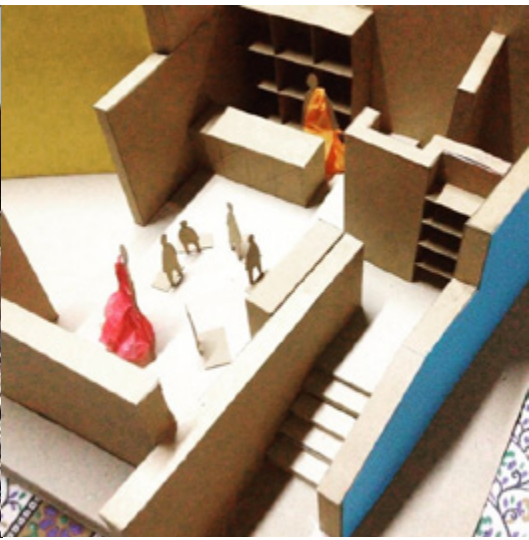
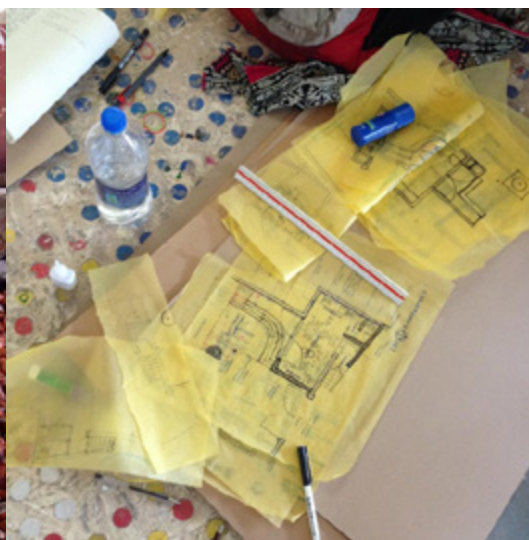
## Bholu 15













## Bholu 15 - Volunteer's Report

Niini and I arrived in Ahmedabad in January 2016 as volunteer architects to design and oversee construction of Bholu 15. We were greeted with the vibrant colours, smells and sounds of India and warmly welcomed into the Manav Sadhna family. Now we are back home in the cool of a Brisbane winter, it is a privilege to reflect on our time in Ahmedabad and recognise that India and Bholu 15 have become part of who we are as people and who we are as professionals.

On a typical day during construction we left our home in the morning and walked for 20 minutes over a creek on a makeshift bridge of concrete pipes and past houses made of cardboard, hessian, plastic and brick to get to our site. Children living along our route got to know us quite well and would greet us enthusiastically, shouting our names and asking for photographs. Sometimes we stopped for a game of improvised cricket, to let the children try on my hat or to pet the new baby goat. The enthusiasm of the children allowed us to engage with the whole community and become a part of the fabric of their lives. We observed the daily rhythms of meals, going to school, going to work, card games and household chores that are repeated all over the world.

Upon arrival on site we would discuss the plan for the day with our contractors using improvised and often ridiculous methods of communication that combined English, Gujarati, sketches, models and excessive hand gestures. Often when we thought everyone had understood each other events unfolded rather differently to our expectations! These daily challenges tested our preconceived ideas, gave us insights into new ways of doing things and ultimately taught us patience.

Every day at mid-morning and mid-afternoon we would stop for a chai break, which was often brought to us by one of the Bholu 15 teachers or collected from the community centre up the road. Over chai we would chat with the labourers in broken English/Gujarati and get to know more about their lives. Sometimes the children came by to play and sometimes the neighbours would invite us over for a meal or yet another cup of chai. Manav Sadhna staff and volunteers also regularly dropped in to help out and offer support, encouragement or nourishment.

It is these relationships and the tremendous support of the TAP team (both in India and Australia) that have taught us the importance of giving and the impact architecture can make on communities. We now understand the slum not as an abstract idea and unfamiliar context but as a reality; a neighbourhood of families surviving and living their lives. Living and working here has helped us to develop an understanding of a different culture and environment, presented us with new ideas, confronted our biases and privileges and given us many new friends.

Niini and I are overjoyed to have contributed to a better future for the children and community of Bholu 15. Bholu 15 is not only a preschool and a place for community gathering; for us, it is the summary of the relationships we have made, memories we will cherish and a reminder of all that we have received through the act of giving.

**Kali Marnane**  
TAP Architect Volunteer





# Project Report - Bholu 14

**PROJECT:** Bholu 14 Anganwadi/ Preschool

**TYPE OF WORK:** New design and lightweight construction exploration.

**LOCATION:** Sabarmati community, Ahmedabad, Gujarat, India.

**DATE:** June 2016 – A great hope to finish by December 2016

**AUSTRALIAN TAP VOLUNTEERS:** Gemma Cooke, Nikki Holdsworth (2015), Kali Marnane (2016)

**LOCAL TAP VOLUNTEERS:** Harshil Parekh, Shailaja Patel (2016)

**BUILDER:** yet to be selected

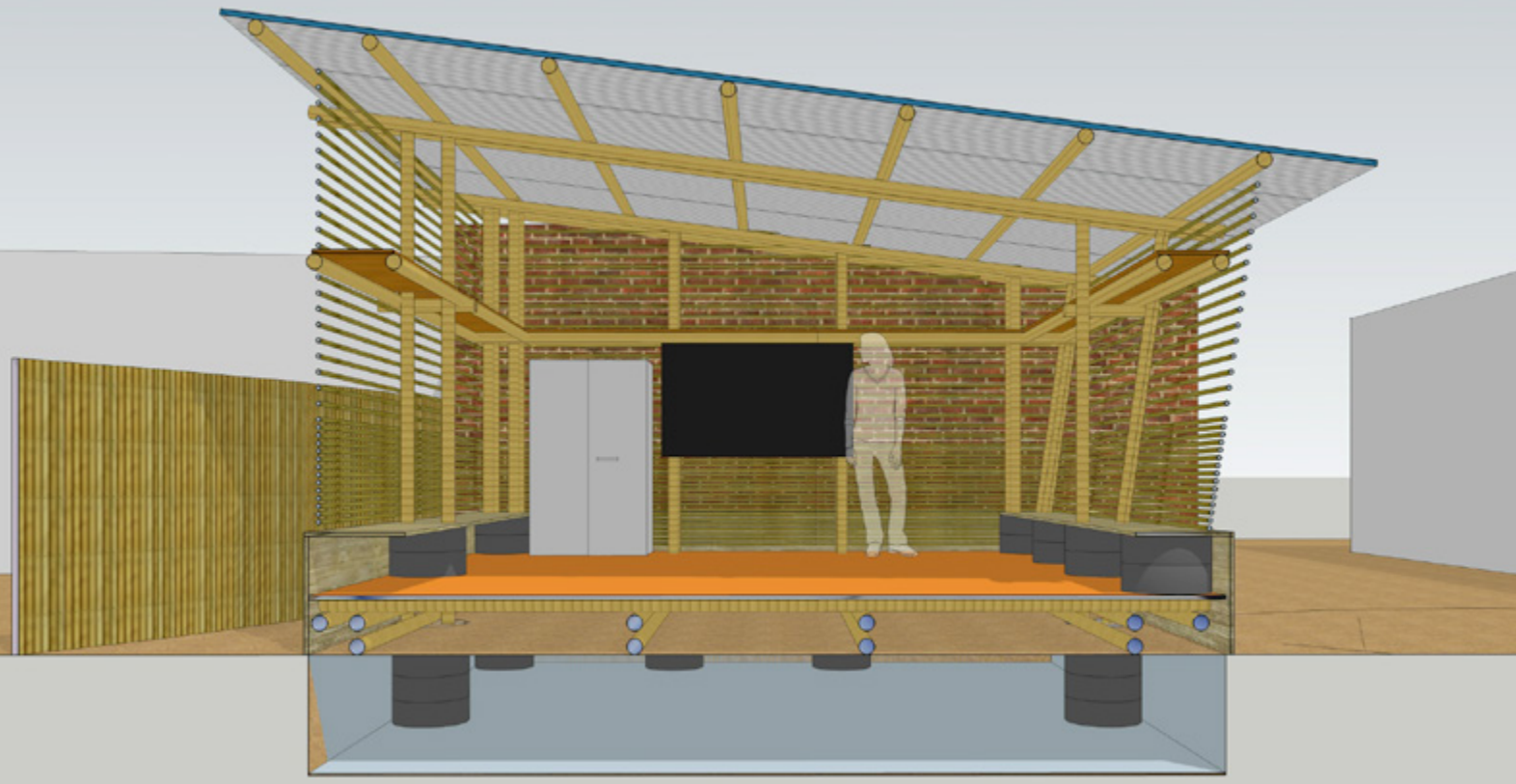
**STRUCTURAL ENGINEER:** Anviksha Consultants, Ahmedabad

**GEOTECHNICAL ENGINEER:** Geotech Soil Testing Laboratory, Ahmedabad

**TOTAL COST:** TBC

Bholu 14 site is situated in an informal settlement 8km away from the Gandhi Ashram in an area called Sabarmati. The particular challenge with this site is the land has been used in the past as a dumping ground for the community which presents us with difficult soil conditions. Due to the soil condition it is preferable to use lightweight construction, which is not only a structurally logical approach, but also allows for the structure to be dismantled and re-used elsewhere in the event the site is reclaimed by the government in years to come. At present Bholu14 is at design development stage, we are exploring bamboo as the primary construction material. The community have preserved the “empty” site for more than a year in anticipation of the new preschool being built. With the hope of the community in mind the construction of Bholu14 will start soon.

*“For an architect, it is very important to understand the impact of what they are creating . The whole process of creating a bholu anganwadi teaches us a lot, we learn new lessons from site to site and we learn from each community. We try to give back to the community with love. The more I serve, the more I learn. Even with the pressure on the community for displacement by the government, people will need basic education to survive. We will keep creating new Bholus to serve society by educating our kids in better conditions.”* **Harshil Parekh**







Fundraising

# THE ANGANWADI PROJECT.



## City 2 Surf

Together with a team of 18 people including TAP volunteers, board members, Armadillo&Co people and family and friends, who ran, walked and jogged all the way from Sydney City to Bondi.

The team fundraised more than \$6000 which went towards the 2015/16 building season.

We are very grateful for everyone who came for the big race, especially those from interstate and all who helped donate to the event.





## Armadillo&Co Rug Auction

Created from the workshop from the Inspired Adventures trip in 2014, Armadillo&Co developed an exclusive range of 12 rugs called "The Origami Collection".

They were designed based from the folded paper drawings that Jackie Jardine did with the children in Bholu 11.

The 12 rugs were auctioned online on ebay and Armadillo&Co raised more than \$16,000 towards the 2015/16 building season.





# Financials 2015-16

THE ANGANWADI PROJECT INCORPORATED  
ABN 12 314 134 057

PROFIT AND LOSS STATEMENT  
FOR THE YEAR ENDED 30 June 2016

	Note	2016 \$	2015 \$
Profit before income tax		16,555.88	76,505.93
Income tax expense		-	-
Profit after income tax		16,555.88	76,505.93
Retained earnings beginning of financial year		118,920.77	42,414.84
Total available for appropriation		135,476.65	118,920.77
Retained earnings end of financial year		135,476.65	118,920.77



THE ANGANWADI PROJECT INCORPORATED  
ABN 12 314 134 057

BALANCE SHEET  
AS AT 30 June 2016

	Note	2016 \$	2015 \$
<b>ASSETS</b>			
<b>CURRENT ASSETS</b>			
Cash and cash equivalents	2	135,476.66	118,920.78
<b>TOTAL CURRENT ASSETS</b>		<u>135,476.66</u>	<u>118,920.78</u>
<b>TOTAL ASSETS</b>		<u>135,476.66</u>	<u>118,920.78</u>
<b>LIABILITIES</b>			
<b>TOTAL LIABILITIES</b>		<u>-</u>	<u>-</u>
<b>NET ASSETS</b>		<u>135,476.66</u>	<u>118,920.78</u>
<b>EQUITY</b>			
Retained Earnings	3	135,476.66	118,920.78
<b>TOTAL EQUITY</b>		<u>135,476.66</u>	<u>118,920.78</u>

THE ANGANWADI PROJECT INCORPORATED  
ABN 12 314 134 057

NOTES TO THE FINANCIAL STATEMENTS  
FOR THE YEAR ENDED 30 June 2016

	Note	2016 \$	2015 \$
<b>2. Cash and Cash Equivalents</b>			
Cash at Bank - Westpac 15267		135,476.66	118,775.98
Paypal account		-	144.80
		<u>135,476.66</u>	<u>118,920.78</u>
<b>3. Retained Earnings</b>			
Retained earnings at the beginning of the financial year		118,920.78	42,414.65
Net profit attributable to members of the company		16,555.88	76,505.93
Retained earnings at the end of the financial year		<u>135,476.66</u>	<u>118,920.78</u>



THE ANGANWADI PROJECT INCORPORATED  
ABN 12 314 134 057

PROFIT AND LOSS STATEMENT  
FOR THE YEAR ENDED 30 June 2016

Note	2016 \$	2015 \$
<b>SALES</b>		
Donation - General	3,178.83	16,566.93
Donation - Periodic	12,300.00	12,500.00
Fundraising - Events	22,297.71	7,634.03
Fundraising - Inspired Adventures	-	47,106.32
Fundraising - Volunteers	1,500.00	18,258.48
Association Membership	175.00	280.00
	<u>39,451.54</u>	<u>100,444.74</u>
<b>LESS: COST OF CONSTRUCTION</b>		
Project - Bholu 6 renovations		2,700.00
Repairs & Maintenance Bholus 1-13		5,500.00
Land purchase - Bholu 15	3,800.00	
Bholu 15 costs	<u>10,200.00</u>	
	<u>14,000.00</u>	<u>8,200.00</u>
<b>GROSS PROFIT</b>	<u>25,451.54</u>	<u>92,244.74</u>
<b>OTHER INCOME</b>		
Interest received	<u>135.79</u>	<u>184.83</u>
	<u>25,587.33</u>	<u>92,429.57</u>
<b>EXPENSES</b>		
Admin and Stationery	-	167.20
Bank charges	192.00	34.25
Fundraising (event) expenses	55.00	-
Fundraising Investment - Inspired Adventures	-	2,860.00
GoFundRaise Annual Fees	660.00	-
GoFundRaise Service Fees	411.34	4,679.33
GoFundRaise Merchant Fees	87.89	945.34
Insurance - Liability	1,608.75	1,608.75
Insurance - General Liability	1,026.85	1,302.62
Insurance - Corporate Travel	2,169.00	3,045.45
Software subscriptions	1,568.20	-
Web Hosting and Internet	<u>1,252.42</u>	<u>1,280.70</u>
	<u>9,031.45</u>	<u>15,923.64</u>
<b>Profit before income tax</b>	<u>16,555.88</u>	<u>76,505.93</u>

## Treasurer's Summary

The financial position of the Anganwadi Project continued to improve during the 2016 year, with an annual surplus from activities of \$16,555.88 (2015 \$76,505.93)

The decrease in annual surplus in 2016 (compared to 2015) was mainly due to there being no Inspired Adventures program, which accounted for nearly 50% of the fundraising income in 2015. This year, in addition to our regular corporate sponsors and annual "City2Surf" fundraiser, we made nearly \$16,000 from an auction of ten "Origami" rugs inspired by designs of the children in the anganwadi.

Construction expenses in 2016 were higher than last year, with the successful completion of Bholu 15, which included land purchase. The total cost of \$14,000 was in line with the budget.

Operating expenses were down compared to last year, and there was no expenditure on maintenance or repairs of existing anganwadi.

The accumulated surplus at the end of the 2016 year is \$135,476.66, which puts the Association in a very strong financial position at the start of the new year to commence building work on the next project.

**Pru Wood**  
Treasurer





Tekra Slums, Ahmedabad, Gujarat, INDIA



## Looking to the future

After completing another successful season The Anganwadi Project is looking forward to another season committed to designing and working with the local community to build more preschools for slum children of Ahmedabad and their families.

2016/17 will see the construction of Bholu 14, our first lightweight bamboo structure as well the design and build of a new anganwadi, Bholu 16. As always, TAP will maintain and support the up keep of earlier TAP anganwadis.

TAP will continue to strengthen our relationships across Manav Sadhna. We will continue to work in collaboration with local architects and builders and work sustainably in close consultation with the local communities.

We would not be able to make such a strong contribution to livelihoods of these slum communities without the financial support of our donors and the wider TAP community, including our extraordinary and inspiring volunteers who generously volunteer their time and expertise.

We welcome and encourage new members and donations to help strengthen TAP and its ability to positively impact the lives of so many.

With thanks and gratitude,

The Anganwadi Project



